



## Westmill Generation Graphs - Q1 2016

Westmill Solar Co-op. Ltd





## Issue and Revision Record

Revision	Date	Originator	Checker	Approver	Narrative
1.0	18/04/2016	VR			Graphs

## Disclaimer

This document has been prepared for the titled project or named part thereof and should not be relied upon or used for any other project without an independent check being carried out as to its suitability and prior written authority of OST Energy being obtained. OST Energy accepts no responsibility or liability for the consequence of this document being used for a purpose other than the purposes for which it was commissioned. Any person using or relying on the document for such other purpose agrees, and will by such use or reliance be taken to confirm his agreement to indemnify OST Energy for all loss or damage resulting therefrom. OST Energy accepts no responsibility or liability for this document to any party other than the person by whom it was commissioned.

As provided for in OST Energy’s proposal, to the extent that this report is based on information supplied by other parties, OST Energy accepts no liability for any loss or damage suffered by the client, whether contractual or tortious, stemming from any conclusions based on data supplied by parties other than OST Energy and used by OST Energy in preparing this report.

## Awards and Recognitions



**ACQ Magazine:**  
 ‘UK Technical Advisor of the Year’  
 2014, 2012 and 2009



**Finance Monthly Magazine:**  
 ‘UK Renewables Advisory Firm of the Year’  
 2014 and 2010

## Contents

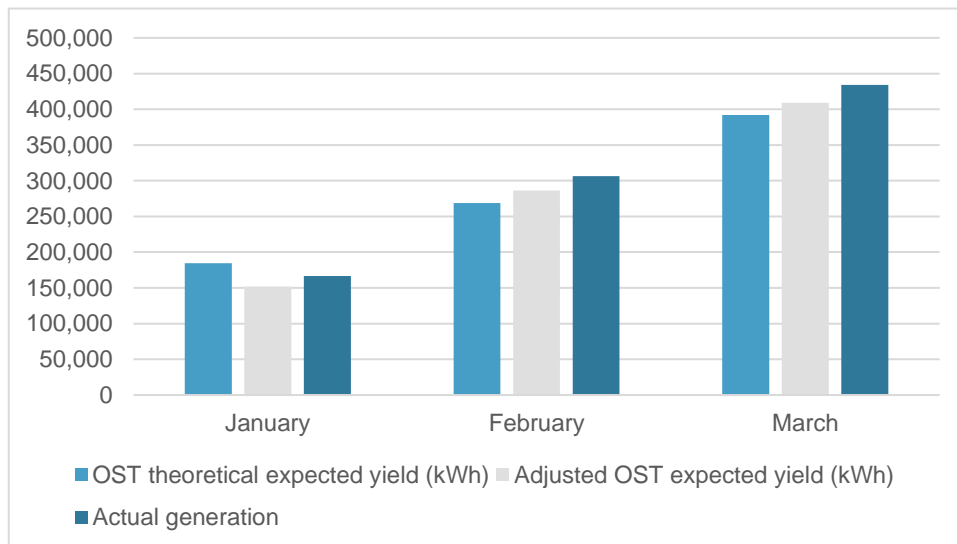
1	Quarterly Generation.....	1
2	Monthly Generation and Irradiation .....	2

# 1 Quarterly Generation

**Table 1: Generation by Month and Quarter – Quarter 1 2016**

Month	OST theoretical expected yield (kWh)	Adjusted OST expected yield (kWh)	Actual generation (kWh)	Delta actual gen. vs expected gen. (%)	Delta actual gen. vs adjusted gen. (%)
January	184,445	151,662	166,515	-9.72%	9.79%
February	268,590	286,107	306,372	14.07%	7.08%
March	392,089	408,932	434,105	10.72%	6.16%
Q1 2016 Total	845,124	846,702	906,992	7.32%	7.12%
Q1 2015 Total	848,518	816,984	909,000	7.13%	11.26

**Figure 1: Quarterly Generation**



## 2 Monthly Generation and Irradiation

Figure 1: January 2016

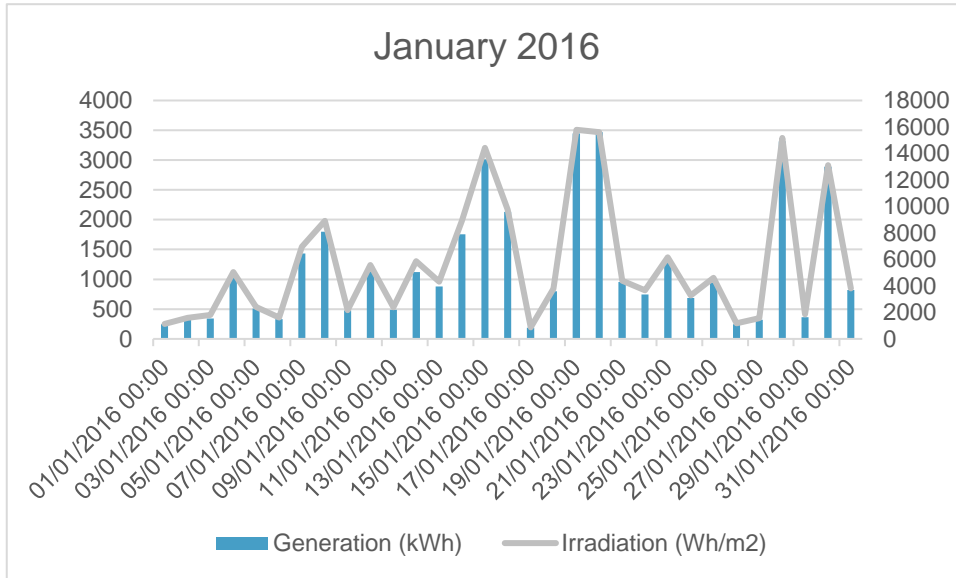


Figure 2: February 2016

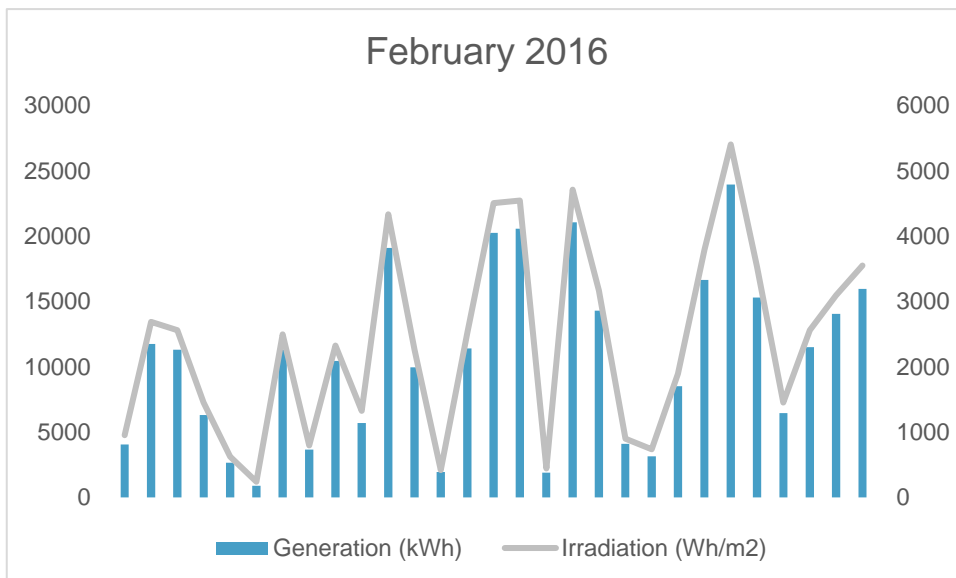
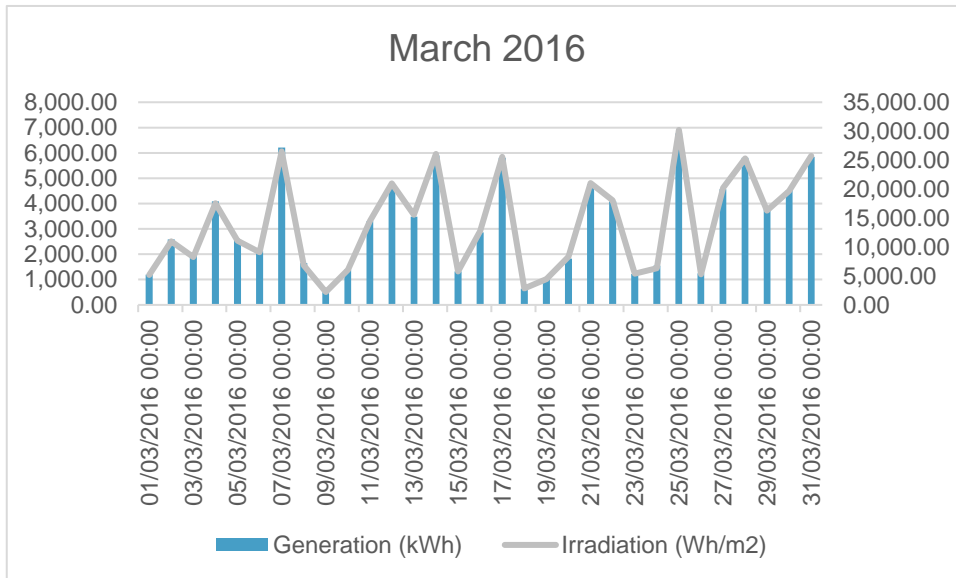


Figure 3: March 2016







---

## UK – HQ BRIGHTON

### OST Energy

2<sup>nd</sup> Floor Nile House  
Nile Street  
Brighton, BN1 1HW, UK

+44 (0)1273 819 429  
info@ostenergy.com

---

## USA

### OST Energy North America

P.O.BOX 5345  
Plymouth, Michigan  
48170, U.S.A

+1 734 377 4649  
info@ostenergy.com

---

## SOUTH AFRICA

### OST Energy Africa

Conescan Office Suite 1  
6<sup>th</sup> Floor 79, Roeland Street  
Cape Town, South Africa

+27 (0)71 639 4462  
info@ostenergy.com

---

## INDIA

---

## UK – LONDON

### OST Energy

5<sup>th</sup> Floor  
81 Piccadilly South  
Mayfair, W1J 8HY, UK

+44 (0)207 629 0017  
info@ostenergy.com

---

## ITALY

### OST Italia

Via Ugo Bassi 7  
20159 – Milano  
Italy

+39 02 4539 1280  
ostitalia@ostenergy.com

---

## AUSTRALIA

### OST Energy Asia Pacific

Suite 126, 117 Old Pittwater Road  
Brookvale, NSW 2100  
Australia

+61 488 065151  
info@ostenergy.com

---

**OST Energy India**

7th Floor, Infinity Tower B South  
DLF Cyber City  
Gurgaon, 12002, India

+91 (0)124 4537800  
info@ostenergy.com

Website: [www.ostenergy.com](http://www.ostenergy.com)  
Twitter: @ost\_energy