



# Westmill Solar Park

Quarterly Report graphs – Q1

Westmill Solar Cooperative

December 2017

V1.0

## Issue and Revision Record

Revision	Date	Originator	Checker	Approver	Narrative
V1.0	12/12/2017	GRS	RST	RST	Requested charts

## Disclaimer

This document has been prepared for the titled project or named part thereof and should not be relied upon or used for any other project without an independent check being carried out as to its suitability and prior written authority of RINA Consulting being obtained. RINA Consulting accepts no responsibility or liability for the consequence of this document being used for a purpose other than those for which it was commissioned. Any person using or relying on the document for such other purpose will by such use or reliance be taken to confirm his agreement to indemnify RINA Consulting for all loss or damage resulting therefrom. RINA Consulting accepts no responsibility or liability for this document to any party other than the person by whom it was commissioned.

As provided for in RINA Consulting's proposal, to the extent that this report is based on information supplied by other parties, RINA Consulting accepts no liability for any loss or damage suffered by the client, whether contractual or tortious, stemming from any conclusions based on data supplied by parties other than RINA Consulting and used by RINA Consulting in preparing this report.

## Contents

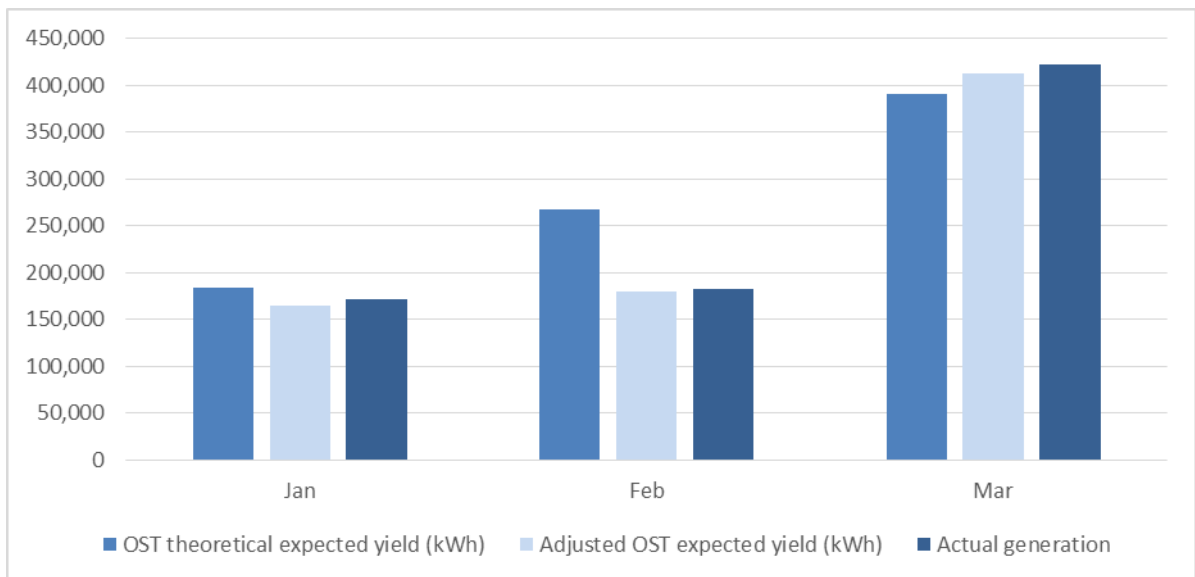
1	Quarterly Generation – Q1, 2017.....	4
2	Monthly Generation and irradiation.....	5

# 1 Quarterly Generation – Q1, 2017

**Table 1: Generation by Month and Quarter**

Month	RINA theoretical expected yield (kWh)	Adjusted RINA expected yield (kWh)	Actual generation	Delta actual gen. vs expected gen. (%)	Delta actual gen. vs adjusted gen. (%)
Jan	183,678	164,925	171,607	-6.6%	4.1%
Feb	267,472	180,354	181,814	-32.0%	0.8%
Mar	390,457	412,832	421,837	8.0%	2.2%
<b>Q1 2017 Total</b>	<b>841,607</b>	<b>758,112</b>	<b>775,258</b>	<b>-7.9%</b>	<b>2.3%</b>
<b>Q1 2016 Total</b>	<b>845,124</b>	<b>846,701</b>	<b>906,992</b>	<b>7.3%</b>	<b>7.1%</b>

**Figure 1: Monthly generation**





## 2 Monthly Generation and irradiation

Figure 2: Irradiation P50 and Actual

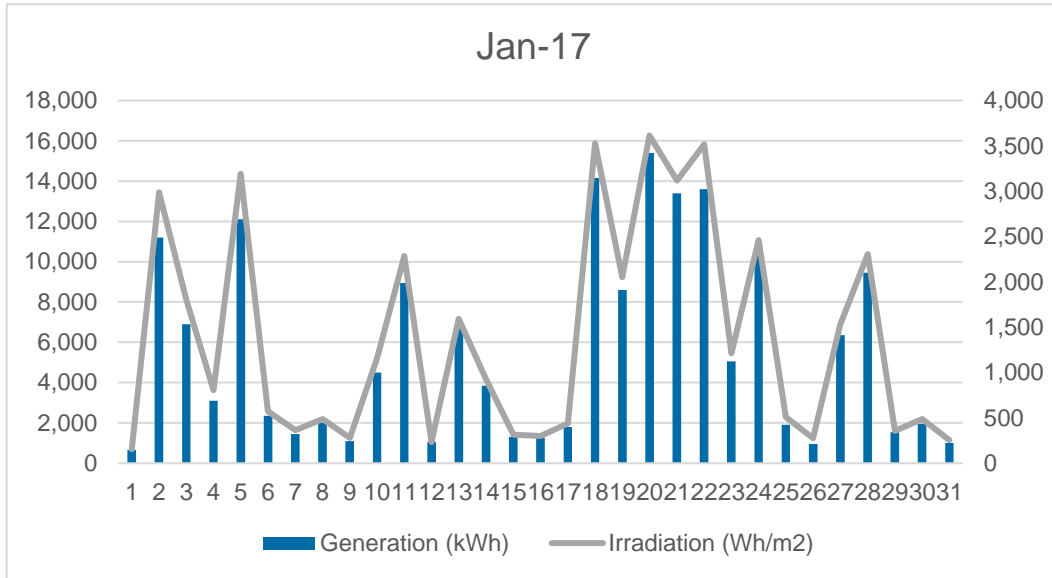


Figure 3: Irradiation P50 and Actual

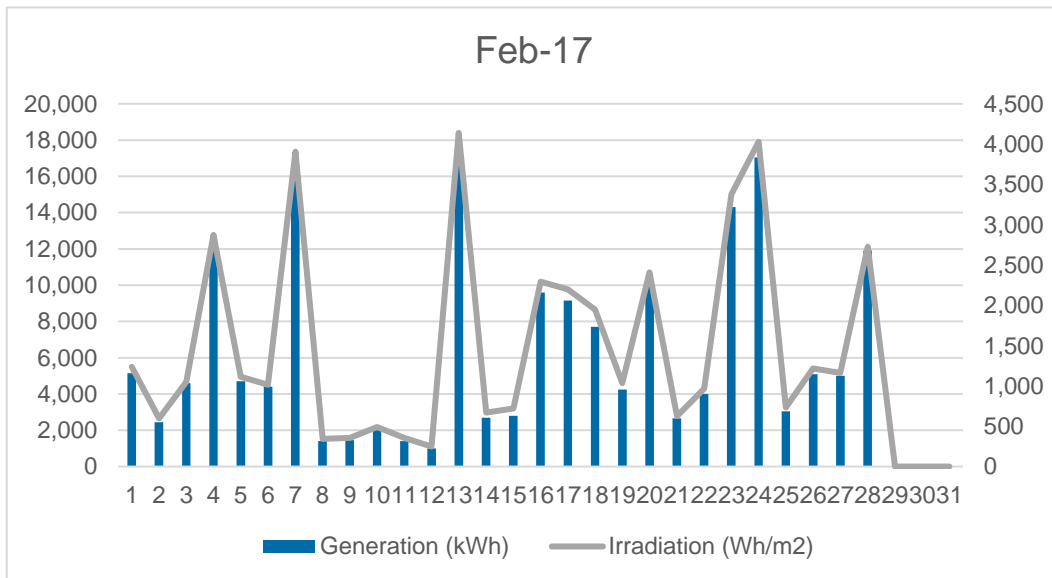
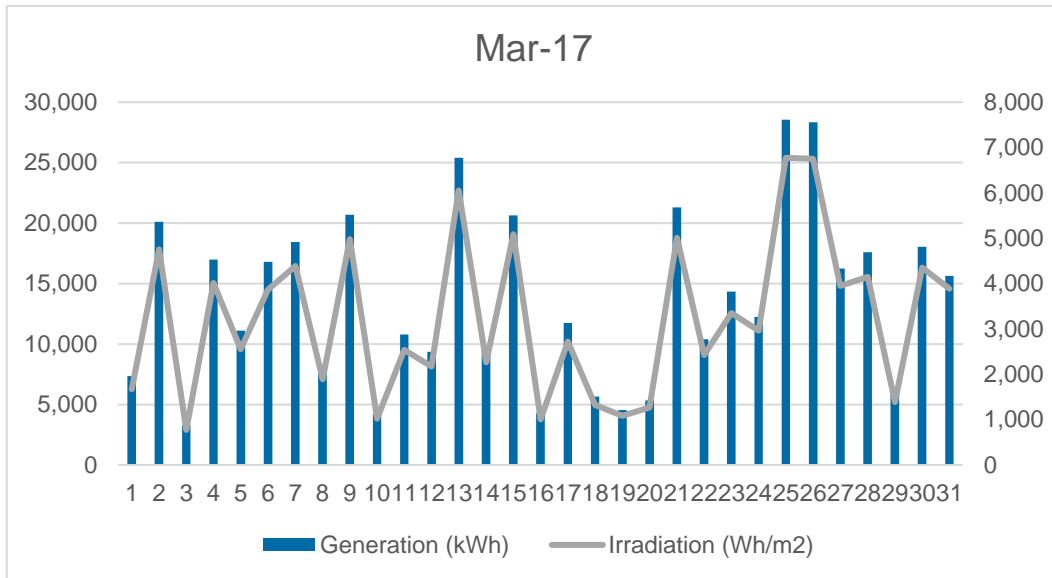




Figure 4: Irradiation P50 and Actual





**RINA Consulting Ltd.**

2nd Floor Offices  
Nile House, Nile Street  
Brighton, BN1 1HW, UK

+44 (0)1273 819 429  
[www.rinaconsulting.org](http://www.rinaconsulting.org)